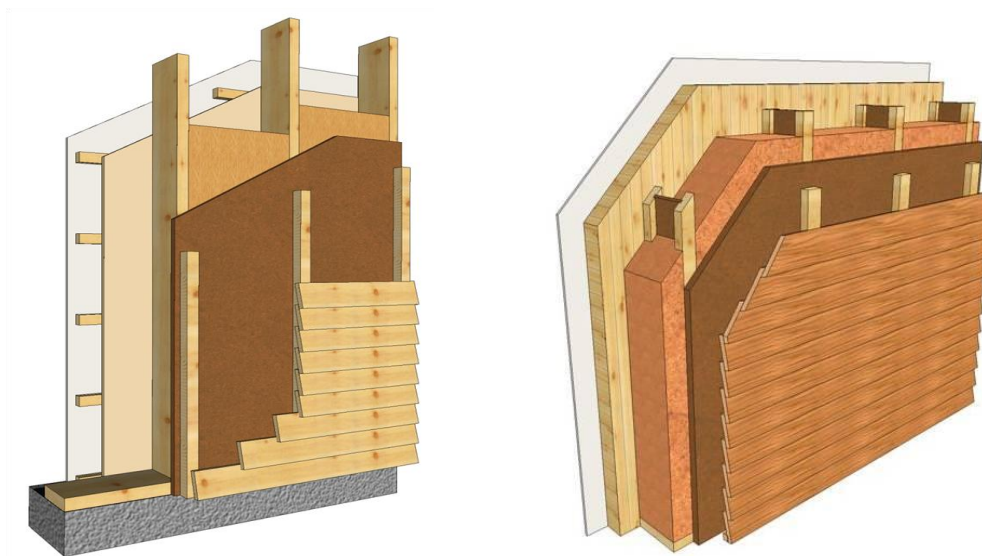


# 1. Wall – ventilated facade –diffusion open and ecological



- from exterior: soft wood fiber insulation board **STEICOuniversal**

thickness:	22, 24, 35, 52, 60, 80, 100, 120, 140, 160 mm
format:	2500 x 600 mm
edge profile:	tongue and groove all 4 edge
density:	about 260 kg/m <sup>3</sup>
specific thermal capacity	2100 c [J / (kg * K)]



Board **STEICOuniversal** may be fully exposed for up to four weeks in a temporary condition



- as construction wall stud I-beams **STEICOWall**

depth h:	160,200,220,240,300,360,400,450,500mm
flange b*h :	45x45mm / 45x60mm / 45x90mm
length :	up to 16m



I-beams **STEICOWall** are very light construction elements. With using **STEICOWall** you can reduce thermal bridges up to 40% compare to solid wood wall studs – so you can be obtained a better U-value by the same thickness of wall.

- **STEICOWall** can be combine with our system product **STEICOUltralam** (LVL):



**STEICOUltralam** can be use as beams, rafters, columns, purlins, decks, window and door lintels, main beams, joists.

depth h:	from 100mm up to 1250mm
thickness	main: 39, 45, 75, 90mm
length :	up to 13m

**STEICOUltralam** combined with **STEICOWall** create a ready system for prefabrication:

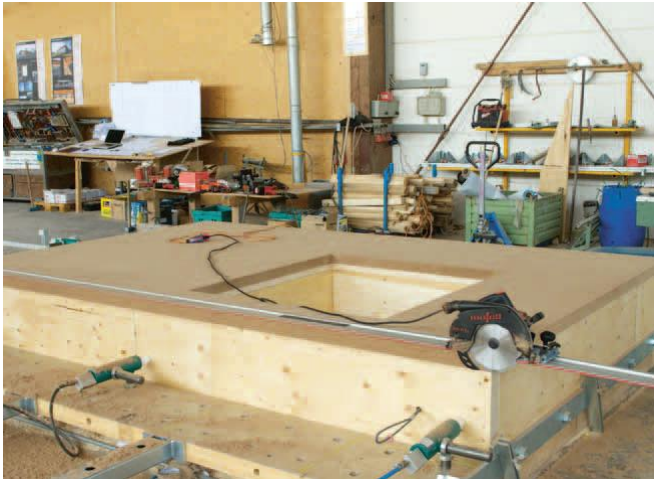


**STEICOWall + STEICOultralam**



**STEICOWall + STEICOultralam + STEICOprotect (insulation board for plaster)**





If the high of wall panels is the same or lower as the high of exterior insulation board STEICO<sup>protect</sup> (or STEICO<sup>universal</sup>) – less then 2600mm – our boards take over construction function – no need to use OSB board from inside !!!

- between of wall studs we recommend to use as insulation high energy efficient and very ecological boards **STEICOflex**

thickness:	40,50,60,80,100,120,140,160,180,200,220,240 mm
format:	1220x575mm
density:	50 kg/m <sup>3</sup>
specific thermal capacity	2100 c [J / (kg * K)]



- the biggest density of insulation wool on the market – without sitting down
- the best specific thermal capacity of insulation product on the market
- the highest moisture absorption capacity of insulation on the market
- the best durability and quality of thermal values
- really ecological insulation





- or between of wall studs we recommend to use as insulation high energy efficient and very ecological loose wood fiber for blowing **STEICOzell**



- max. blowing density – 40kg/m<sup>3</sup> – so 15-20kg/m<sup>2</sup> less like by cellulose
- the best specific thermal capacity of insulation product on the market
- the highest moisture absorption capacity of insulation on the market
- the best durability and quality of thermal values
- really ecological insulation

